



Unex Tower, Station Street, London, E15 1DA

£450 Per Week

A 1 bedroom apartment for rent within one of Stratford's most sought after developments 'UNEX TOWER' E15

Situated on the 12th floor, open plan living room with luxury fitted kitchen, winter room accessed from both the living room & bedroom, luxury bathroom suite and fitted bedroom.

Located next to Stratford station & Westfield Shopping Centre.

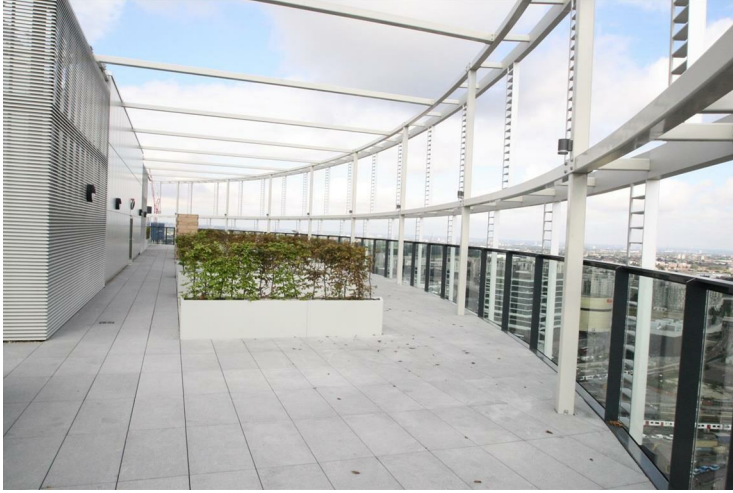
24 hour concierge, stunning residents roof garden.

Comes furnished.

PROPERTY AVAILABLE FROM 20.06.2024

- Residents roof garden
- Winter room
- Next to Westfield shopping center
- 1 Bedroom apartment
- Furnished
- 24 hour concierge
- Available from 20.06.2024
- Next to Stratford station & Bus terminal

Unex Tower, Station Street, London, E15 1DA



RESIDENTS ROOF GARDEN



FULL BEDROOM



UNEX TOWER



BEDROOM VIEW



BATHROOM



WINTER GARDEN

Unex Tower, Station Street, London, E15 1DA



BEDROOM VIEW



RECEPTION ROOM



LIVING SPACE



RECEPTION ROOM VIEW



LIVING SPACE VIEW



KITCHEN

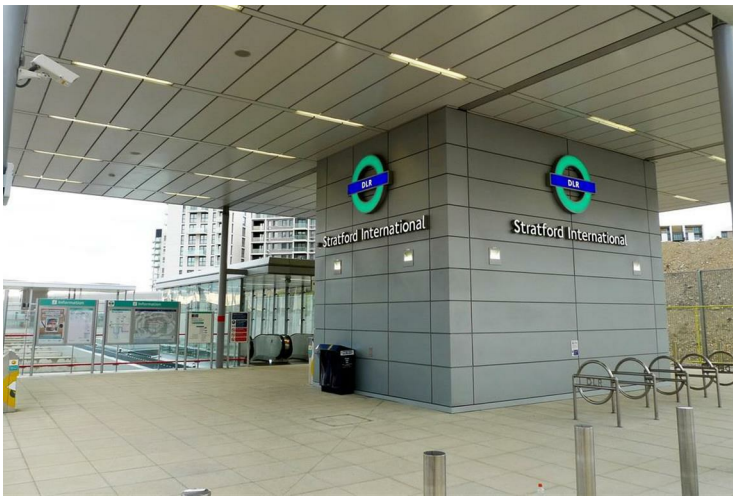
Unex Tower, Station Street, London, E15 1DA



WINTER GARDEN VIEW



STRATFORD STATION



STRATFORD INTERNATIONAL DLR



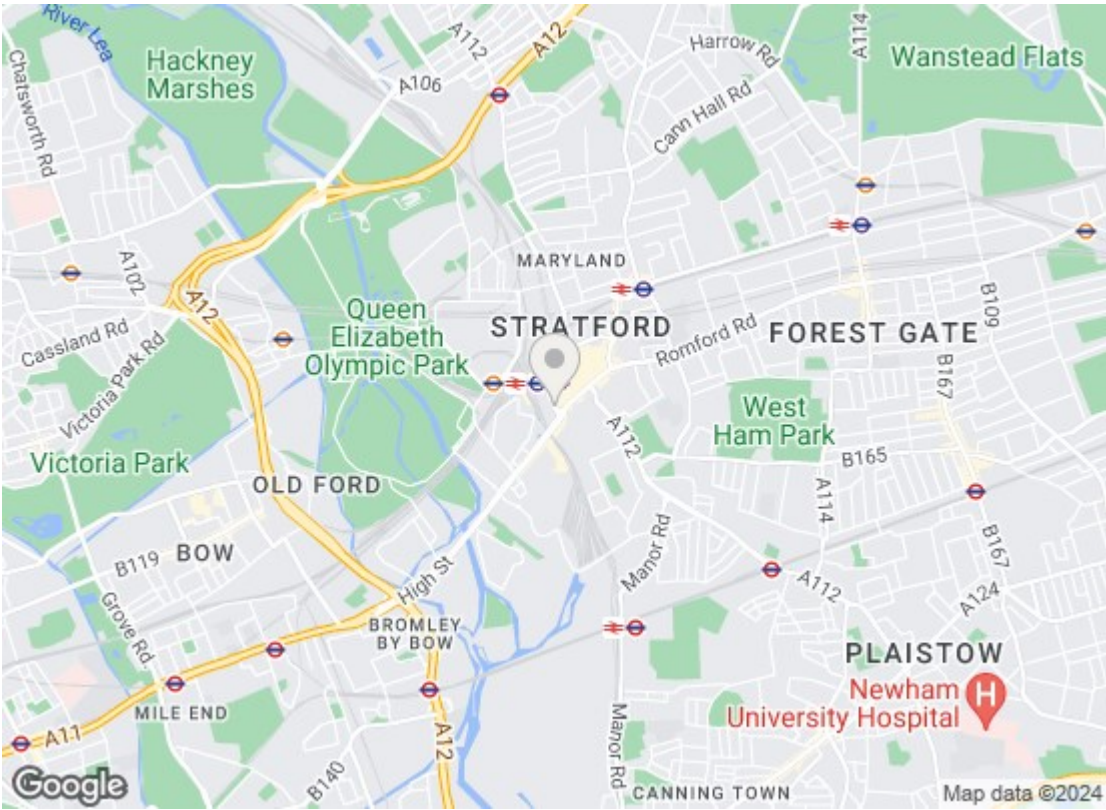
CONCIERGE



STRATFORD INTERNATIONAL



RESIDENTS ROOF GARDEN VIEW



Energy Efficiency Rating		
	Current	Potential
Very energy efficient - lower running costs		
(92 plus) A		
(81-91) B	81	81
(69-80) C		
(55-68) D		
(39-54) E		
(21-38) F		
(1-20) G		
Not energy efficient - higher running costs		
England & Wales		EU Directive 2002/91/EC
Environmental Impact (CO ₂) Rating		
	Current	Potential
Very environmentally friendly - lower CO ₂ emissions		
(92 plus) A	90	90
(81-91) B		
(69-80) C		
(55-68) D		
(39-54) E		
(21-38) F		
(1-20) G		
Not environmentally friendly - higher CO ₂ emissions		
England & Wales		EU Directive 2002/91/EC

We have prepared these property particulars as a general guide to a broad description of the property. They are not intended to constitute part of an offer or contract. We have not carried out a structural survey and the services, appliances and specific fittings have not been tested. All photographs, measurements, floorplans and distances referred to are given as a guide only and should not be relied upon for the purchase of carpets or any other fixtures or fittings. Lease details, service charges and ground rent (where applicable) and council tax are given as a guide only and should be checked and confirmed by your Solicitor prior to exchange of contracts.